

**INTRODUCTION:** 67725 is a coherent, light gray breccia containing pale-colored clasts (Fig. 1). The matrix is fine-grained and the sample is partly coated with glass. It is a rake sample collected halfway between the White Breccia boulders and House Rock and has zap pits on all but one (broken) surface.

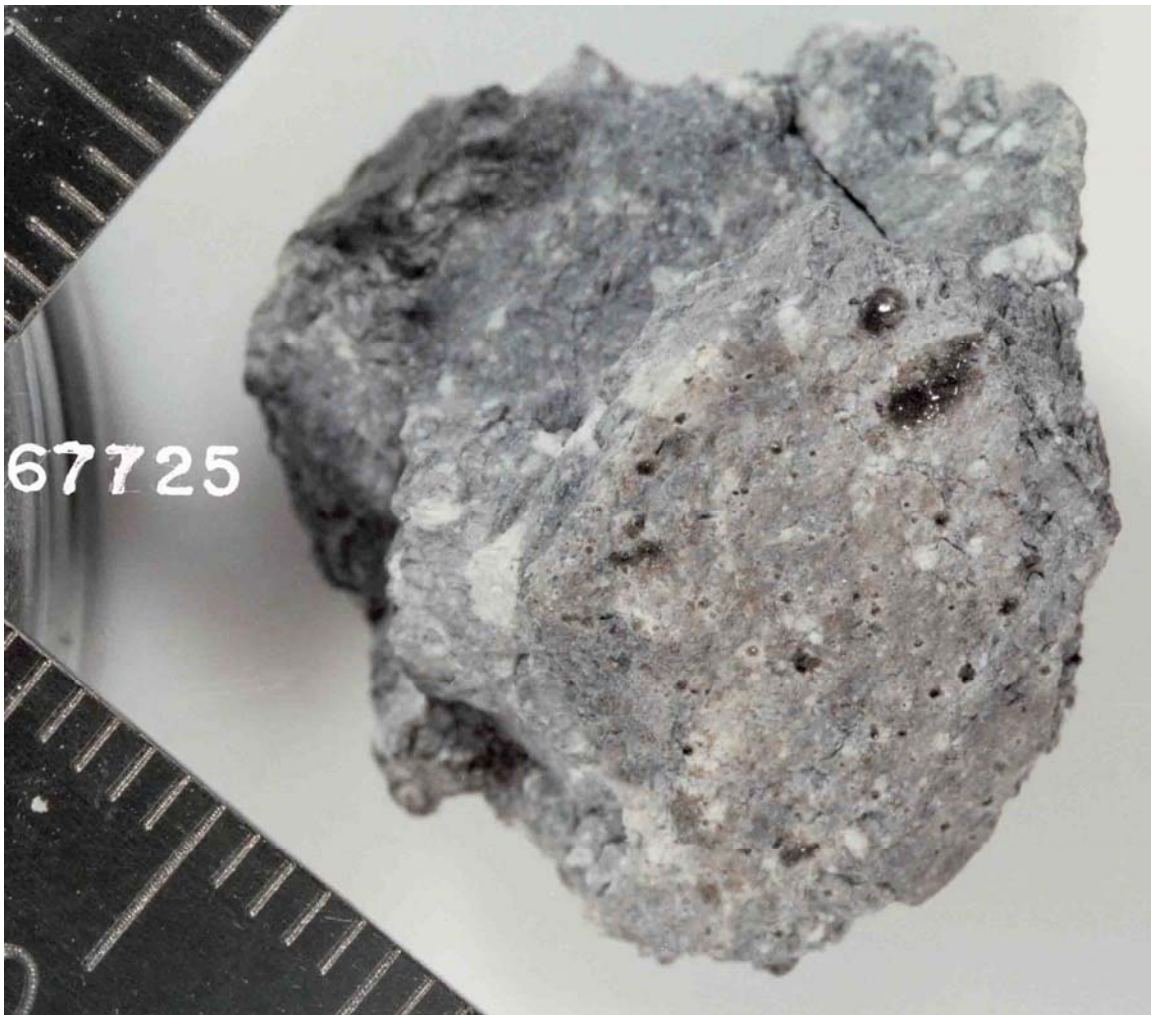


FIGURE 1. Smallest scale division in mm. S-72-51054.